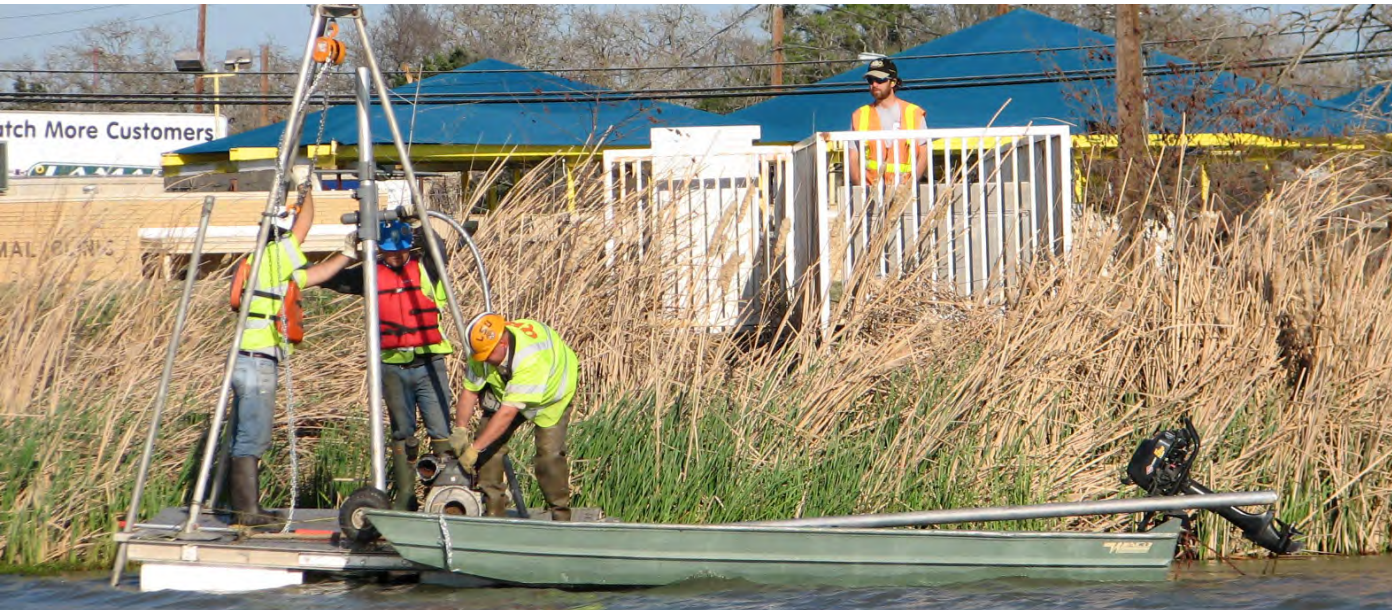




What sets QRI apart from the rest?

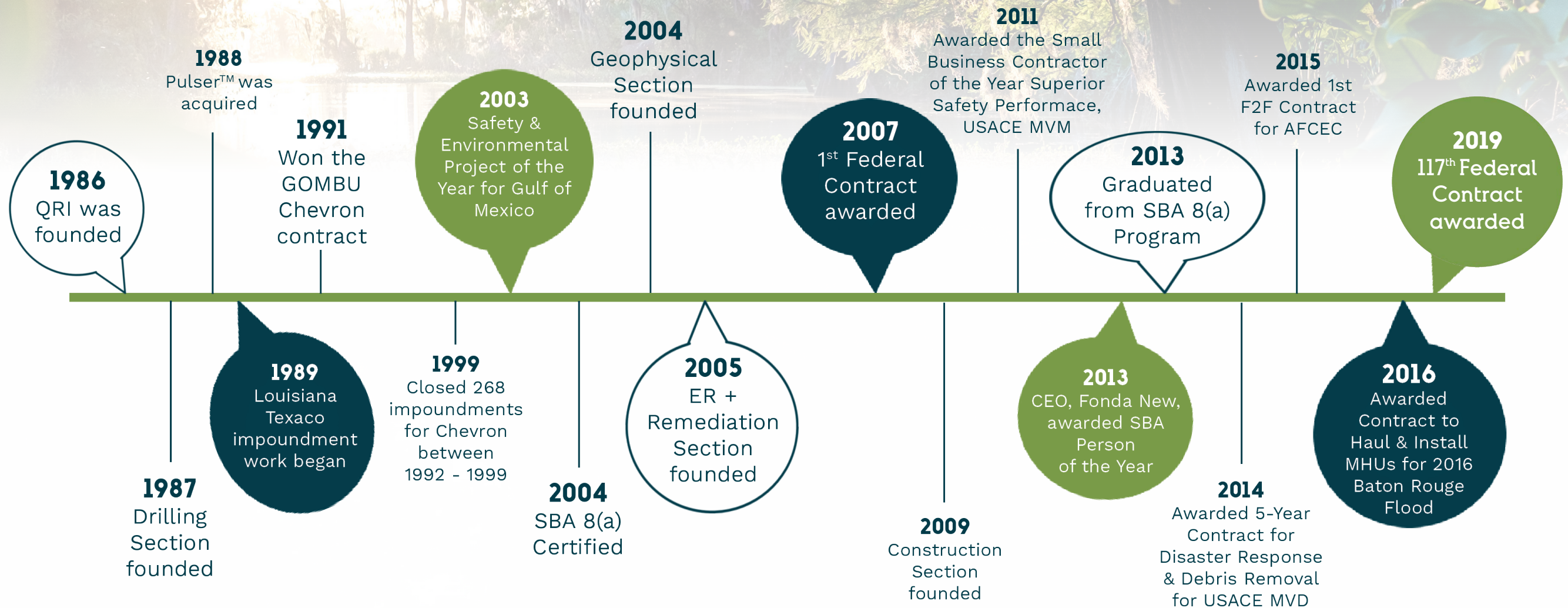


“Quality,
Reliability
and Integrity
- that’s our
promise to
you!”

Established in 1986, Quaternary Resource Investigations, LLC (QRI) is an Economically Disadvantaged Woman Owned Small Business (EDWOSB) headquartered in Baton Rouge, Louisiana. Over the past 30 years, QRI has grown through acquisitions and through the hard work of a staff that believes in our Core Values.

QRI provides environmental consulting, geophysical assessments, environmental remediation, emergency response and construction services. We excel at providing these services to government and commercial clients, as well as the petrochemical and oil and gas industry. QRI delivers professional, on-time and cost-effective results to our clients and partners with Quality, Reliability and Integrity – that’s our promise to you!

QRI through the years...



Environmental Consulting

Government and Industry in Harmony with the Environment



QRI is dedicated to preserving our environment, both locally and nationally, while taking precautions to avoid future damages. Our team of professionals work with government and private sector clients to protect and preserve our nation's natural habitats, our culturally significant sites and artifacts, and our communities.

QRI accounts for our environmental consulting and geophysical activities in the Environmental Consulting Services (ECS) reportable segment. From 2013 to present, 33% of QRI's total revenues were performed in this Section.

QRI's General Services Administration (GSA) 899 Multiple Award Schedule (MAS) allows Federal clients access to all services offered within our

Environmental Consulting Section.

Top clients in this Section include: GSA, Public Building Service (PBS) in Region 7, the United States Army Corps of Engineers (USACE) in multiple Divisions and the Air Force Civil Engineer Center (AFCEC).

GSA is QRI's largest client for ECS. Since securing an 899 GSA MAS in March of 2014, QRI has won 8 ECS contracts totaling \$494 million in capacity.

Services

- Curation Management
- Biological Investigations & Risk Assessments
- Building Air Quality Investigations
- Cultural Resources Services
- EAs / EISs
- Environmental Compliance
- Environmental Training
- Groundwater Classification
- HazMAT / HazWaste Management & Recycling
- Invasive Species Surveys
- Litigation Support
- Mold, Asbestos & Lead Assessments
- Natural Resources Services
- National Environmental Policy Act (NEPA) Reviews
- Phase I, Phase II, Phase III ESAs
- SPCC / SWPPP
- Subject Matter Expert Services
- Subsurface Investigations
- T&E Species Surveys
- Vegetation Surveys
- Wetlands / Waters of the US Reviews



GSA Environmental Services IDIQ

QRI has performed 102 ECS task orders under two Indefinite Delivery / Indefinite Quantity (IDIQ) contracts for the GSA, PBS in Region 7 – Louisiana, Texas, Oklahoma, Arkansas, and New Mexico. These services were performed at over 100 Federal properties and/or buildings across the 5-state Region. Several tasks were performed at U.S. Customs and Border Protection owned Ports of Entry. Task orders have involved several types of environmental studies and evaluations such as NEPA; natural and cultural resources; compliance; pollution prevention; mold, asbestos and lead surveys; air quality surveys; corrective action support; Geographic Information Systems (GIS) support; environmental training; and interaction with public and regulatory agencies.



Cultural and Natural Resources Support

Under this USACE, Tulsa IDIQ contract, QRI has performed on 11 cultural and natural resources task orders at Fort Bliss in New Mexico and Texas. QRI has supported Fort Bliss to enhance sustainability of the military mission through National Historic Preservation Act (NHPA) compliance and curatorial support, vegetation mapping, endangered species monitoring, and invasive species surveys and control.



Services

- Concrete Surveys
- Cultural Site Surveys
- Electromagnetic (EM) 31 / 38 Surveys
- Infrared Thermal Imaging
- Ground Penetrating Radar (GPR) Surveys
- Resistivity Surveys
- Pulser™ Subsurface Stratigraphic Mapping
- Underground Storage Tank (UST) Surveys
- Utility Locating
- Vacuum Excavation

Geophysical

Subsurface Detection that Prevents Time Losses and Saves Lives



Subsurface Stratigraphy Survey

QRI defined the stratigraphy in the upper 100 feet on 56 acres in Hawthorne, California utilizing the Pulser™ Subsurface Survey System (Pulser™) in conjunction with existing databases. Previous lithologic studies presented chaotic bedding relationships that made it difficult to correlate from well to well. As a result, the Pulser™ technique was utilized to develop the stratigraphic framework for the site conceptual model. Pulser™ mapping non-intrusively delineated and refined stratigraphic units across the project site.



GPR, Utility Locating & Vacuum Excavation

QRI provided GPR, EM utility locators, and air knife/vacuum excavation services at 33 retail gasoline distribution sites in the New Orleans and Baton Rouge areas. This utility clearance protocol was a required safety measure performed prior to environmental drilling activities. QRI cleared over 350 boreholes on schedule and with zero lost time.



GPR & EM Surveys at Historical Sites

QRI has performed GPR and EM surveys at multiple historic sites to identify potential anomalies representing historical artifacts or other items of archaeological significance such as burial grounds and historical foundations. Once field acquisition is concluded, basic post-processing is applied to the data collected. QRI provides a report presenting the coordinates and approximate depths for each anomaly detected.

QRI's Geophysical Division was founded in 2004. Our crews can mobilize within 24 hours and as little as 8 hours – this prompt mobilization prevents costly construction delays. Additionally, pre-excavation identification of utilities prevents losses and saves lives. QRI has successfully mapped utilities, rebar & post tension cables, intraslab & sub slab voids, USTs, buried drum debris fields, and contaminants using a combination of technologies supporting global positioning systems (GPS). QRI goes beyond One Call locates on public easements and performs private utility locating.

QRI has developed a non-intrusive geological mapping technology called Pulser™. Pulser™ defines underlying geology to a

depth of 350 feet without extensive drilling. Using subsurface data visualization software, Pulser™ data is transformed into 2D and 3D representations of stratigraphy and lithology.

Top clients in this Section include: Gulf Power Company, CH2M Hill, Wink Engineering, Stratum Engineering, Beta Testing, Mexichem Fluor, PPM Consultants, Palmisano Contractors, Denka Performance Elastomers and GeoEngineers.

Top industrial facilities include: Dupont Pontchartrain Chemical, Phillips 66, Sasol and BP Lubricants.



Remediation

Ensuring Safe Work Environments and Healthy Communities



QRI's Remediation Section was founded in 2005. QRI's number one priority within our Remediation Section is to ensure people are free from life threatening environmental concerns at home, at work and within their communities. We specialize in key remedial efforts that ensure public health and safety.

The effects of large natural or man-made disasters (i.e. Deepwater Horizon oil spill) often requires decades of environmental studies and remedial efforts to restore environments. QRI works to protect and restore natural habitats and their species from environmental concerns due to natural disasters, oil spills, biological pollutants and soil and water contamination.

QRI accounts for our emergency response and remediation activities in the Environmental Remediation Services (ERS) reportable segment. From 2013 to present, 42% of QRI's total revenues were performed in this Section.

*QRI's GSA 899 Schedule allows Federal clients access to most services offered within our Remediation Section.

Top clients include: USACE, Duval Law Firm, Arcadis and Ecology & Environment.

*Note: Radioactive waste and asbestos removal are not allowable under this contract as set forth in FAR Part 36. Disposal services performed under this contract must be ancillary to remediation services performed.

Services

Asbestos, Lead & Mold Remediation
Compliance Monitoring of Remediation Systems
Hard-To-Access Sampling™
Monitoring / Piezometers / Recovery Wells
Process / Produce Water Impoundment Remediation
Pump & Treat Systems
Quality Assurance & Control

Remedial Design Support
Remedial Investigations & Field Studies
Response Actions, Removals & Operations & Maintenance
Soil / Groundwater Remediation
Tank Battery Remediation
Uniform Federal Policy for Quality Assurance Project Plans (UFP-QAPP)



Superfund Site Remediation



Canal Boom Maintenance & Emergency Response

QRI was awarded a \$3.8 million contract with the USACE, Seattle District for the excavation, disposal and capping of soil in 123 residential yards containing arsenic and lead deposition in the Ruston neighborhood of Tacoma, Washington. Under the Comprehensive Environmental Response, Compensation, and Liability Act (CERCLA) and the Resource Conservation and Recovery Act (RCRA), the EPA (Environmental Protection Agency) issued a Record of Decision for the Ruston/North Tacoma Study Area in June 1993, selecting a remedy for soils in residential and public Right-of-Way (ROW) exceeding 230 parts per million (ppm) arsenic or 500 ppm lead. There were 1,800 contaminated yards due to the ASARCO Smelter located in the area from 1890 to 1985 with 1,624 yards having been remediated prior to QRI's contract.

Since August 2007, QRI has received 4 consecutive USACE contracts totaling \$5.8 million to provide boom maintenance and emergency spill response for the 17th Street, Orleans & London Canals in New Orleans, Louisiana. Each of these three facilities handle, store and use oil products in the form of diesel fuel and hydraulic oil in order to run the massive pumps. Common boom maintenance and/or incidents on these pumps have resulted in 45 task orders since 2007.



Services

Disaster Debris Removal
Disaster Monitoring

Emergency Spill Response
Quality Assurance & Control

Emergency Response

Reestablishing Normalcy with a Sense of Urgency



Debris Removal
Monitoring

Following Hurricane Gustav, QRI was awarded a debris monitoring contract by the Baton Rouge Recreation & Park Commission (BREC) for quality assurance monitoring and documentation to meet the Federal Emergency Management Agency's (FEMA) reimbursement eligibility guidelines. QRI successfully completed monitoring and documentation of the removal and disposal of 80,873 yards of storm-related debris from 185 BREC parks. QRI achieved 100% FEMA documentation compliance resulting in the maximum reimbursement for BREC.



Debris Removal, Haul
& Disposal Services

QRI managed the clearing, segregation, recycling, reduction and removal of generated debris in the ROW and on private property on Fire Island, New York following Hurricane Sandy. QRI mobilized \$3.4 million of heavy equipment, including hopper and spud barges, to haul waste containers off of Fire Island. Debris removed consisted of approximately 1,177 cubic yards of vegetative debris and 3,823 tons of construction and demolition debris. QRI accomplished all debris removal activities within 32 days and successfully met a restrictive deadline.



Personal Property
Debris Removal

QRI was awarded three simultaneous personal property debris removal (PPDR) contracts by the USACE, Louisiana Recovery Field Office (LA-RFO). QRI removed 11,022 cubic yards of debris and 20,647 items from 8,173 private properties in Jefferson Parish, Louisiana after Hurricanes Katrina and Rita. Within 48 hours of award, QRI deployed 632 fully equipped crews divided into 105 teams ranging in size from 4 to 7 personnel. QRI received 3 "OUTSTANDING" CCASS Ratings for these contracts.

QRI's Remediation Section was founded in 2005. Man-made and natural disasters can inflict unprecedented devastation on communities. The weight of this devastation is felt not only on a local and personal level, but also on a national level. Such widespread devastation demands the expertise and resources of Federal, state and municipal governments, as well as private-sector contractors and labor forces. QRI knows how to navigate a post-disaster environment and has excelled at providing real resources and solutions that address the needs of post-disaster communities.

QRI has completed 14 contracts in response to natural disasters for a cumulative \$32.5 million. Within these 14 contracts, QRI managed a total of

193 monitors, 339 crews, provided 34,409 Quality Assurance documents, and documented 8,546,015 cubic yards of disaster related debris and 1,075,259 items from Hurricanes Katrina, Rita, Gustav, Ike and Sandy. QRI's most recent disaster-related construction contract was performed for the USACE, Memphis District following Louisiana's 2016 Flood (DR 4277).

QRI's GSA 899 Schedule allows for Disaster Recovery Purchasing. Federal, state and local governments can use QRI's GSA contract for procurements before and after declared disasters.

Top clients include: USACE, Baton Rouge Recreation & Park Commission, TechLaw, MEL, Inc., Weston and Conti.





Construction

Sustaining, Restoring and Modernizing Structures That Last



QRI's Construction Section was founded in 2009. We specialize in sustainment, restoration and modernization at installations and government-owned properties, as well as site preparation activities, remodels and new construction for commercial clients.

QRI originally acquired construction capabilities to complement our other service Sections as projects in remote locations often required mobile offices or the construction of staging structures. For example, QRI personnel renovated and installed mobile office trailers to remote sites along the Mississippi River for multiple relief well installation contracts for the USACE, Memphis District.

QRI accounts for all construction related activities in the Sustainment, Restoration and Modernization (SRM) reportable segment. From 2013 to present, 25% of QRI's total revenues were performed in this Section.

Top clients include: USACE, United States Air Force (USAF), FEMA and multiple private sector customers.

Services

- Asphalt & Concrete Parking Lot Installation
- Concrete & Structural Repair
- Demolition of Structures
- Ditching / Grading
- Geotechnical Drilling
- Hardening of Facilities
- Historical Restoration / Interpretative Design
- Heavy & Civil Engineering Construction
- Landscape Services
- Levee Construction & Repair
- New Construction
- Relief Well Installation
- Remodeling & Additions
- Restorations & Renovations
- Site Preparation



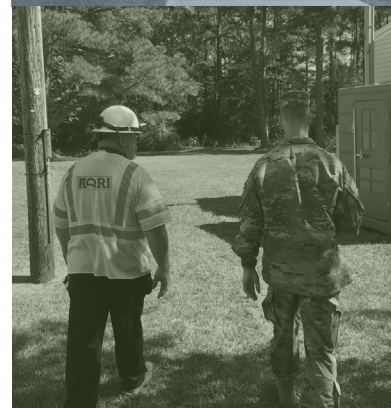
Mat Casting Yard

QRI constructed a new, masonry office building designed by the USACE, New Orleans District. The 70' x 20' structure was supported by 44 H pilings with a reinforced supported concrete slab on top of the levee located adjacent to the St. Francisville Mat Casting Yard.



Lock Master Structure

QRI was awarded a contract to construct a new, rigid-frame office building by the USACE, New Orleans District. This two-story, 2,176 square foot structure was built on a soil supported concrete slab on top of the levee located adjacent to the Port Allen Lock. The purpose of the building was to create a permanent commercial structure for the Port Allen Lock Master and his staff. It also doubles as a Visitor Center with an exhibit room showcasing the Lock and how it works, as well as being a hurricane shelter.



Haul and Install FEMA Mobile Housing Units

Under two separate and concurrent contracts, QRI hauled and installed a total of 731 FEMA Mobile Housing Unit (MHU) trailers to victims of the 2016 Louisiana Flood (DR 4277). QRI successfully planned and managed the dispatch of drivers (hauling); performed site preparations, MHU installation and inspection; managed specialty subcontractors and worked with local city parish and utility companies to obtain proper permitting. Documentation for daily activities was prepared by QRI and delivered nightly to the USACE and FEMA.

Corporate Information



CORPORATE

13588 Florida Blvd.
Baton Rouge, LA 70819
Office: 225.292.1400
info@qri.com

CEO

Fonda Lindfors New, PG, PMP
fnew@qri.com

PRESIDENT

Kenny New
knew@qri.com

FEDERAL

Paul Henderson
phen@qri.com

COMMERCIAL

Jason New
jnew@qri.com



LICENSES

LA Contractor License #40834 with the following classifications:

- Building Construction: All Parishes
- Heavy Construction: All Parishes
- Highway, Street & Bridge Construction: All Parishes
- Mechanical Work (Statewide): All Parishes
- Mold Remediation Contractor: All Parishes
- Residential Building Contractor: All Parishes
- Specialty: Asbestos Removal & Abatement: All Parishes
- Specialty: Clearing, Grubbing & Snagging: All Parishes
- Specialty: Hazardous Waste Treatment or Removal: All Parishes
- Specialty: Water Well Drilling: All Parishes

LA Residential Building Contractor #881017

LA Home Improvement Contractor #553562

LA Mold Remediation #250574

LA-DNR Water Well Contractor WWC #358

LA Professional Geologist #905

TX Professional Geologist #4141

LDEQ Response Action Contractor #112040

Project Management Professional #1714745

Multiple Mold, Asbestos and Lead Licenses and Certifications throughout the Southeast and Southwest.

CERTIFICATIONS

EDWOSB

LADOTD-DBE

Metro Transit Authority of Harris County, TX-SBE

NCTRCA-M/WBE

SCTRCA-SBE WBE

WBENC-WBE

WOSB

DUNS: 108552200

CAGE CODE: 3FCQ9

GSA 899 MAS: GS10F105BA

NAICS: 541 | 561, 562 | 236, 237, 238

Acronym List

AFCEC - Air Force Civil Engineer Center
BREC - Baton Rouge Recreation & Park Commission
CCASS - Construction Contractor Appraisal Support System
CERCLA - Comprehensive Environmental Response, Compensation, and Liability Act
EA - Environmental Assessment
ECS - Environmental Consulting Services
EDWOSB - Economically Disadvantaged Woman Owned Small Business
EIS - Environmental Impact Statement
EM - Electromagnetic
EPA - Environmental Protection Agency
ER - Emergency Response
ERS - Environmental Remediation Services
ESA - Environmental Site Assessment
F2F - Fence-to-Fence
FEMA - Federal Emergency Management Agency
GIS - Geographic Information Systems
GOMBU - Gulf of Mexico Business Unit
GPR - Ground Penetrating Radar
GPS - Global Positioning Systems
GSA - General Services Administration
HazMAT - Hazardous Material
HazWaste - Hazardous Waste
IDIQ - Indefinite Delivery / Indefinite Quantity
LA-RFO - Louisiana Recovery Field Office
MAS - Multiple Award Schedule
MHU - Mobile Housing Units
MVD - Mississippi Valley Division (USACE)
MVM - Mississippi Valley Memphis District (USACE)
NEPA - National Environmental Policy Act
NHPA - National Historic Preservation Act
PBS - Public Building Service
PPDR - Personal Property Debris Removal
QRI - Quaternary Resource Investigations, LLC
RCRA - Resource Conservation and Recovery Act
ROW - Right-of-Way
SBA - Small Business Administration
SPCC - Spill Prevention, Control and Countermeasure
SRM - Sustainment, Restoration and Modernization
SWPP - Stormwater Pollution Prevention Plans
UFP-QAPP - Uniform Federal Policy for Quality Assurance Project Plans
USACE - United States Army Corps of Engineers
USAF - United States Air Force
UST - Underground Storage Tanks



13588 Florida Blvd.
Baton Rouge, LA 70819
225.292.1400 | www.qri.com