

POINTS OF CONTACT

COMMERCIAL

Jeremy Ruiz  
jrui@qri.com  
225.278.3281

Amie Chatman  
acha@qri.com  
225.335.3868

INDUSTRY

Perrin Sims  
psim@qri.com  
985.264.5251

Jady New  
jady@qri.com  
225.268.2596

GOVERNMENT

Kenny New  
knew@qri.com  
225.268.5692

Fonda Lindfors New, PG, PMP  
fnew@qri.com  
225.202.8438

Nina Goodrich  
ngoo@qri.com  
225.931.0323

Jason New  
jnew@qri.com  
225.202.8437

Bonnie Duncan  
bduncan@qri.com  
443.538.0724

COMPANY INFO

13588 Florida Blvd  
Baton Rouge, LA 70819

Phone: 225.292.1400  
24/7: 800.889.5378

Email: info@qri.com  
www.qri.com

OUR SERVICES

Environmental & Engineering

- Biological Services
- Cultural Services
- Natural Services
- Geophysical Services
- Pulser™ Subsurface Survey System
- NEPA Services
- Phase I, II, III ESA
- EA / EIS
- GIS Support
- SPCC / SWPPP
- Mold, Asbestos, Pb
- Regulatory Comp. & Permitting
- Design
- Subject Matter Expert

Infrastructure & Construction

- Utility Locates
- Geotechnical Drilling
- Relief Well Installation
- Demolition
- Ditching / Grading
- Parking Lot Installs
- Site Preparation
- Levee Construction
- Building Construction
- HWY, Street & Bridge
- Heavy & Civil Engineering
- Lock & Dam Repairs
- Landscape Services
- Remodeling

Remediation & Emergency Response

- Spill Response
- Disaster Response
- Disaster Monitoring
- MHU Haul & Install
- Debris Removal
- Wells (Recovery, MW, Piezometer)
- Environmental Sequence Stratigraphy (ESS)
- Soil / Groundwater
- Mold, Asbestos, & Pb
- HTAS™
- Pit Removal
- Pump & Treat
- RA, Removals & O/M

Facility Support & Asset Management

- AutoCAD, GIS Systems, Maximo®
- Base Operational Support
- Security System Services
- Bldg. Environmental Controls
- Energy Management
- Facility Condition Assessments
- Installation of Automation Systems
- Installation of PACS
- Digital Twins
- Installation of Sales, Admin, Operational Systems [Timothy™]

QRI'S HISTORY ALONG THE MISSISSIPPI RIVER

1

1986 - 1993: QRI, located along the Lower Mississippi River in the Upper Coastal Zone, was founded to assess and close the Exploration & Production process water impoundments in TX and LA. QRI focused primarily on industrial clients (e.g., Chevron, Dow, Ethyl, Gulf Power) and Commercial clients (e.g., Tetra Tech, Jacobs, Arcadis US, AECOM, WSP, TechLaw, Inc.).

QRI developed trademarked Hard-To-Access Sampling (HTAS™) technology to define closure plans on CERCLA USEPA Superfund sites (39), oil field sites (1,464), and industrial RCRA water impoundments (109).

QRI developed trademarked Pulser™ (geophysical subsurface technology) to perform Environmental Sequence Stratigraphy (ESS) for environmental & engineering consulting and remediation.



2

1994 - 2006: QRI was certified as a Federal 8(a) Contractor in 2004 and was awarded its first Federal prime contract in 2005. With Commercial, Industrial, and Government contracts located in the Gulf of Mexico and the Lower Mississippi River, QRI began expanding west and north of the Middle Mississippi River region.

QRI's expertise, referred to as "unequaled in Louisiana" by a well-known industry lawyer, was sought for litigation concerning regulatory standards for process water impoundment closure and coastal restoration.

QRI's business units expanded to Emergency Response and Remediation, resulting in important Federal subcontracting work for USEPA START post Hurricanes Katrina and Rita.

QRI also added Direct Push Technology (DPT) Drilling Services in conjunction with HTAS™ and Subsurface Utility Engineering (SUE) Services.

3

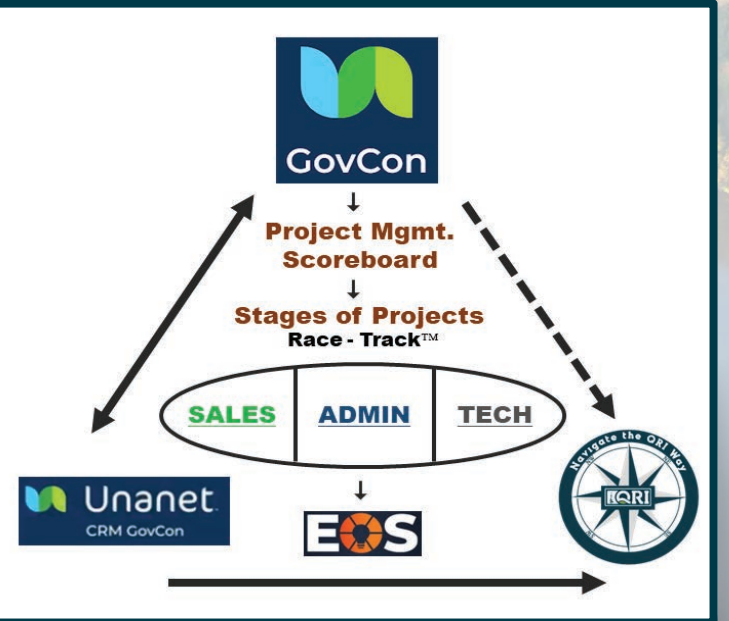
2007 - 2015: QRI acquired multiple Federal contracts west and east of Old Man River. Eastern pursuits won contracts with USACE New York, Savannah, and Jacksonville Districts. Western pursuits achieved contracts with USAF AFCEE, GSA Region 7, and USACE Districts, including Fort Worth, Vicksburg, Memphis, Seattle, Galveston, Tulsa, and 9 other USACE districts.

QRI added Construction to its services (including Levee and River Infrastructure) and Facility Support sections.

QRI formed multiple Mentor-Protégé and Joint Venture relationships to expand our geographic territory.

QRI developed an operational management structure based on ISO and CMMI standards (Timothy™).

Timothy™ System



4

2016 to Present: QRI added Engineering Services (including transportation/installation of MHUs and Security Systems sections) to its expanding portfolio of services.

Despite the 2016 floods impacting QRI headquarters (see live screenshot from WAFF News), we won two Haul & Install contracts and executed the work, within 45 days, from our flooded 6-acre facility to support other flood victims.

QRI's stability has been a very critical factor in its continued success despite natural disasters, pandemics, recessions, industry failures, client mergers, and Federal policy changes.



From QRI's start in the Delta of the Mississippi River to the River's origin in Minnesota to continuous expansion across the USA and beyond, the company proudly spotlights our 6,326 projects with a current contract value of \$660.3M. Across QRI's Commercial, Industrial, and Government sections, our cumulative experience supports our clients' missions for environmental, engineering, civil works, construction, restoration, and natural disaster recovery projects.

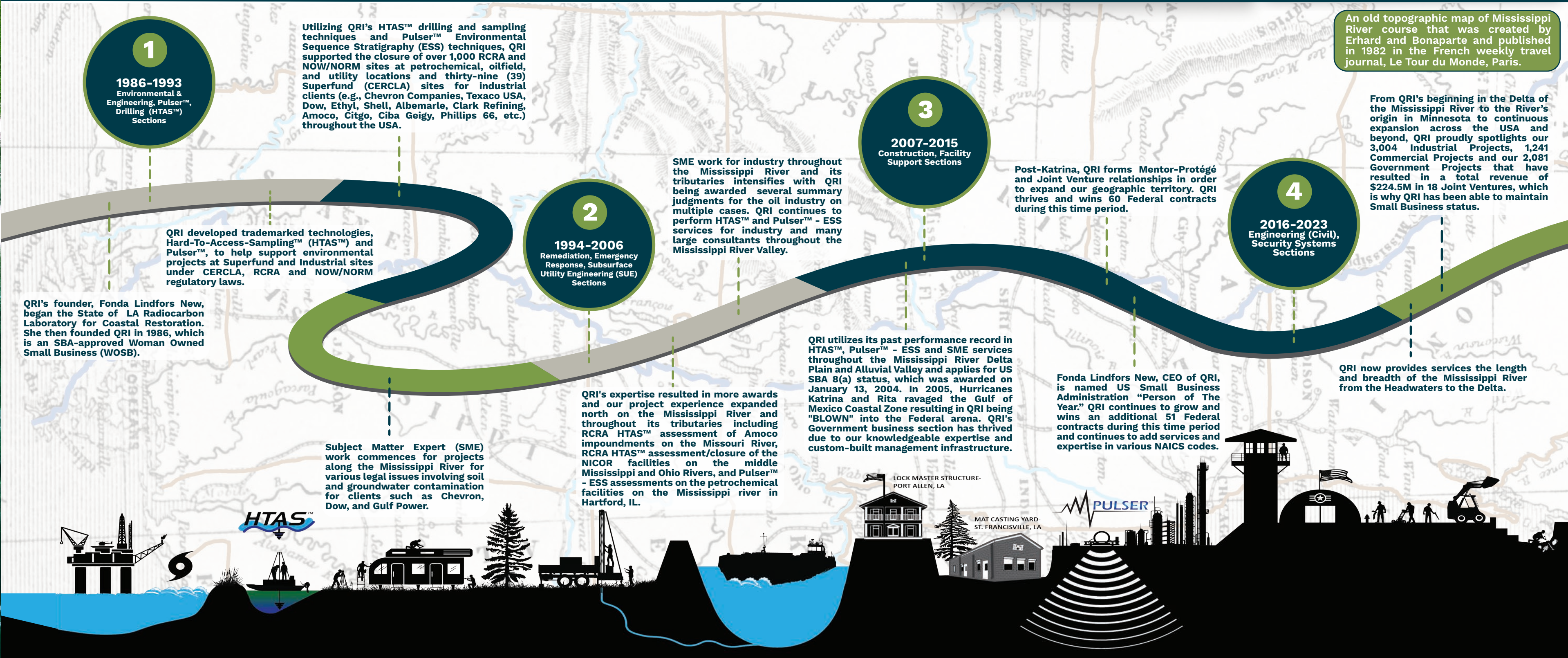
MARKET	Commercial	Industry	Government
PROJECTS	1,241	3,004	2,081
AMOUNT	\$5M	\$31M	\$189M

Woman Owned Small Business (WOSB)  
UBI: W7CKNLUW6K9  
CAGE CODE: 3FCQ3  
GSA 889 MAS: GSIOF056A  
NAICS: 5411561, 5621236, 237238

WHO WE ARE!

QRI  
Quaternary Resource Investigations, LLC

QUALITY | RELIABILITY | INTEGRITY



1

1986-1993  
Environmental & Engineering, Pulser™, Drilling (HTAS™) Sections

Utilizing QRI's HTAS™ drilling and sampling techniques and Pulser™ Environmental Sequence Stratigraphy (ESS) techniques, QRI supported the closure of over 1,000 RCRA and NOW/NORM sites at petrochemical, oilfield, and utility locations and thirty-nine (39) Superfund (CERCLA) sites for industrial clients (e.g., Chevron Companies, Texaco USA, Dow, Ethyl, Shell, Albemarle, Clark Refining, Amoco, Citgo, Ciba Geigy, Phillips 66, etc.) throughout the USA.

QRI developed trademarked technologies, Hard-To-Access-Sampling™ (HTAS™) and Pulser™, to help support environmental projects at Superfund and Industrial sites under CERCLA, RCRA and NOW/NORM regulatory laws.

QRI's founder, Fonda Lindfors New, began the State of LA Radiocarbon Laboratory for Coastal Restoration. She then founded QRI in 1986, which is an SBA-approved Woman Owned Small Business (WOSB).

Subject Matter Expert (SME) work commences for projects along the Mississippi River for various legal issues involving soil and groundwater contamination for clients such as Chevron, Dow, and Gulf Power.

2

1994-2006  
Remediation, Emergency Response, Subsurface Utility Engineering (SUE) Sections

QRI's expertise resulted in more awards and our project experience expanded north on the Mississippi River and throughout its tributaries including RCRA HTAS™ assessment of Amoco impoundments on the Missouri River, RCRA HTAS™ assessment/closure of the NICOR facilities on the middle Mississippi and Ohio Rivers, and Pulser™ - ESS assessments on the petrochemical facilities on the Mississippi river in Hartford, IL.

SME work for industry throughout the Mississippi River and its tributaries intensifies with QRI being awarded several summary judgments for the oil industry on multiple cases. QRI continues to perform HTAS™ and Pulser™ - ESS services for industry and many large consultants throughout the Mississippi River Valley.

3

2007-2015  
Construction, Facility Support Sections

QRI utilizes its past performance record in HTAS™, Pulser™ - ESS and SME services throughout the Mississippi River Delta Plain and Alluvial Valley and applies for US SBA 8(a) status, which was awarded on January 13, 2004. In 2005, Hurricanes Katrina and Rita ravaged the Gulf of Mexico Coastal Zone resulting in QRI being "BLOWN" into the Federal arena. QRI's Government business section has thrived due to our knowledgeable expertise and custom-built management infrastructure.

Post-Katrina, QRI forms Mentor-Protégé and Joint Venture relationships in order to expand our geographic territory. QRI thrives and wins 60 Federal contracts during this time period.

Fonda Lindfors New, CEO of QRI, is named US Small Business Administration "Person of the Year." QRI continues to grow and wins an additional 51 Federal contracts during this time period and continues to add services and expertise in various NAICS codes.

4

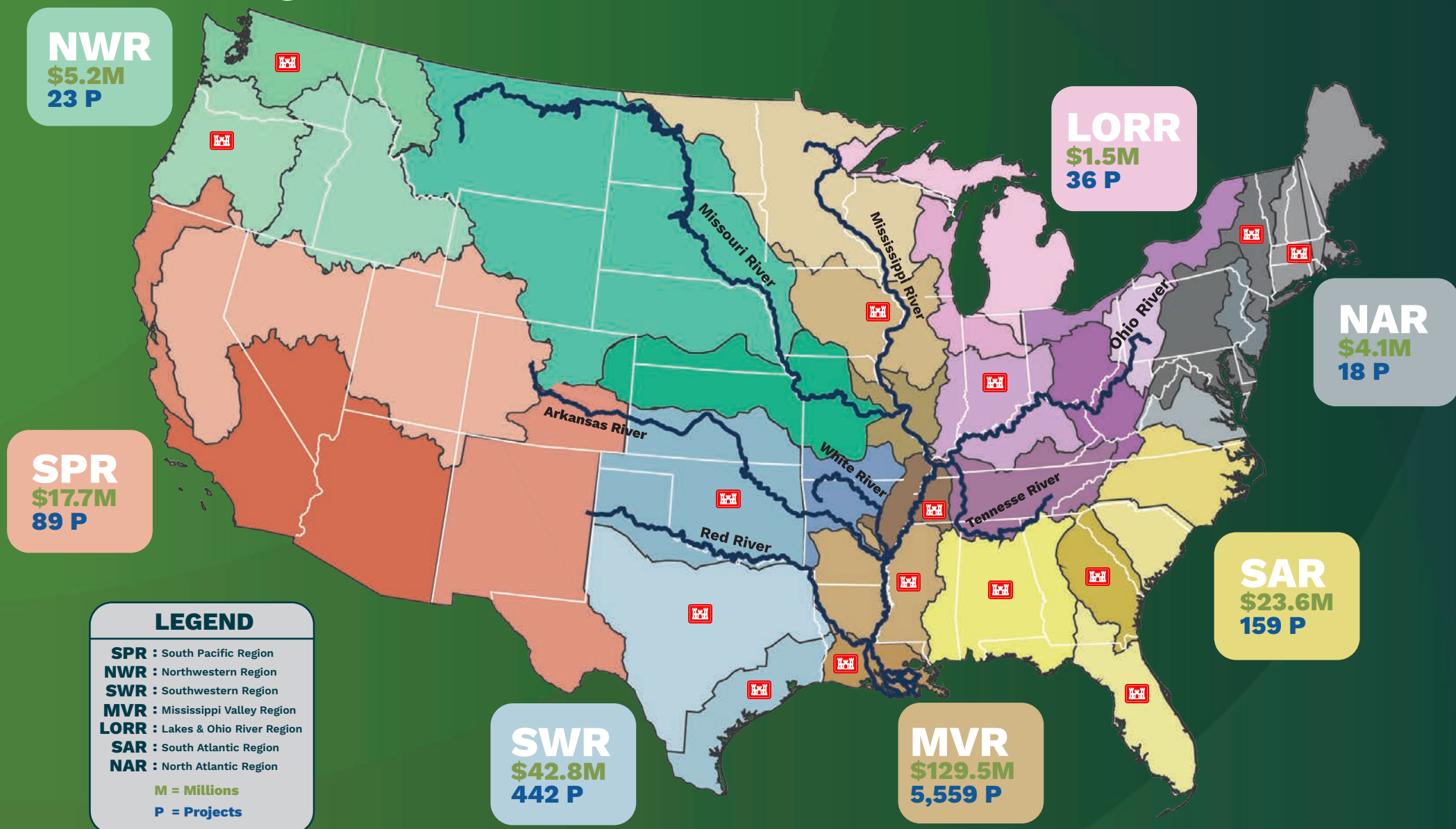
2016-2023  
Engineering (Civil), Security Systems Sections

QRI now provides services the length and breadth of the Mississippi River from the Headwaters to the Delta.

An old topographic map of Mississippi River course that was created by Erhard and Bonaparte and published in 1882 in the French weekly travel journal, Le Tour du Monde, Paris.



# QRI PROJECT HISTORY (1986–Present)



## SERVICE AREAS

213112 - HTAS™ | Support Activities, Oil & Gas  
213113 - Pulser™ | Support Activities, Mining  
236220 - Residential Remodelers  
237110 - Commercial & Institutional Building Construction  
237310 - Water & Sewer Line Construction  
237990 - Highway, Street, & Bridge Construction  
238150 - Heavy & Civil Engineering Construction  
238350 - Glass & Glazing Contractors  
238910 - Finish Carpentry Contractors  
238910 - Site Preparation Contractors  
238990 - Natural Disasters | Specialty Trade Contractors  
332999 - Other Miscellaneous Fabricated Metal Product  
423390 - Other Construction Material Merchant Wholesalers  
483211 - Inland Water Freight Transportation  
532490 - Other Commercial & Industrial Equipment Rental  
541330 - Engineering Services  
541350 - Mold-As-Pb | Building Inspection Services  
541360 - Geophysical Surveying and Mapping  
541370 - Infrared | Surveying & Mapping Services  
541380 - DPT | Geotechnical Testing  
541430 - Graphic Design Services  
541511 - IT | Computer Programming Services  
541620 - Environmental Consulting Services  
541690 - SME | Scientific & Technical Consulting  
561730 - Landscaping Services  
562119 - Natural Disasters | Other Waste Collection  
562910 - Remediation  
562998 - Natural Disasters | Environmental Waste Management  
811310 - Commercial & Industrial Equipment Repair | Maintenance

### KEY

Primary = \$35M - \$3M  
Secondary = \$2.99M - \$0.50M  
Tertiary = <\$0.50M - \$0.01M



15 USACE Districts that  
QRI is a PRIME Contractor

## GOVERNMENT & INDUSTRY TOP CLIENTS



### HTAS™ Sampling at 39 CERCLA Sites; TX-LA-MS-AL-FL-SC

**Clients:** Tetra Tech, CH2M Hill, Shaw, Radian, URS, etc.  
**Obligated Value:** \$2,173,444

#### Description:

- Method = HTAS™ for cores measuring 3" OD with a length from 5' to 30'.
- 3,127 core sludges and underlying contaminated sediments.
- Sites sampled = TX – 9 sites, LA – 14 sites, MS – 4 sites, AL – 4 sites, FL – 7 sites, SC – 1 site.



### NOW/NORM Site Closures; TX-LA-MS

**Clients:** Chevron USA E&P, Texaco USA E&P, Shell, etc.  
**Obligated Value:** \$11,735,367

#### Description:

- Analysis of sites, waste volumes, remediation estimates, bid packages, removal oversight, closure certification, Hazardous, Toxic, and Radioactive Waste (HTRW) management, recycling, and Subject Matter Expert Services.
- 244 Oil Fields (TX-LA-MS), 1,464 pits.

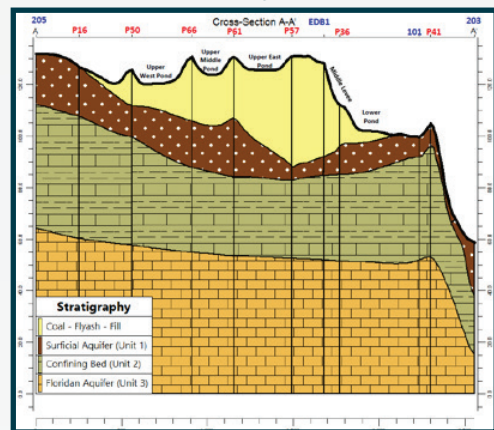


### Pulser™ Tech at Florida's Scholz Generating Plant

**Clients:** Gulf Power Company  
**Obligated Value:** \$292,000

#### Description:

- Defined the ESS in the upper 80 feet of 287 acres surrounding the ash impoundments at the generating plant.
- Determined the Confining Bed underlying the coal-ash fill deposits was continuous across the entire extent of the facility.



### Env. & Sampling Services; Lincoln County, MS

**Client:** Chevron Environmental Management Corp.  
**Obligated Value:** \$4,321,028

#### Description:

- Conducted confirmatory sampling and provided Closure Verification Reports for 212 landowner sites per the court ordered closure standards.
- Reports included sample results that were collected and analyzed for Non-Hazardous Oilfield Waste (NOW) and Naturally Occurring Radioactive Materials (NORM) parameters per the court approved Brookhaven Remediation Plan.

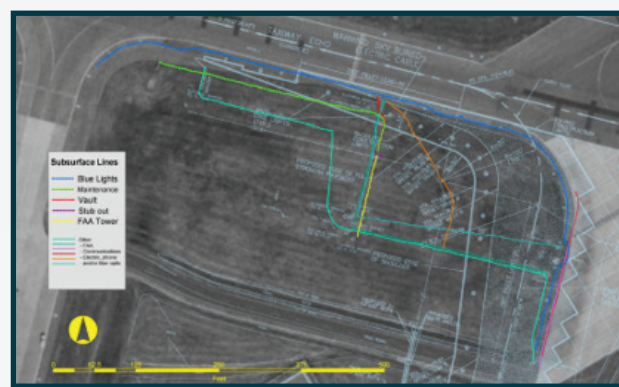


### Subsurface Utility Engineering Services at US Airports

**Clients:** AECOM, Airfield Western, ARA, etc.  
**Obligated Value:** \$2,005,497

#### Description:

- Various uses of SUE and Geophysical services at airports include:
- Locating underground utilities, sub-slab voids, USTs, drums, debris fields, areas of disturbed/ previously excavated soils.
  - Locating rebar, tension cables, conduit, pipes, etc.
  - Determining concrete thickness.



### Hauling & Installing MHUs; Baton Rouge, LA

**Client:** USACE Memphis District  
**Obligated Value:** \$20,529,942

#### Description:

- Transport and installation of 759 Manufactured Housing Units.
- Customized Manufactured Housing Units installation at each site for the conditions due to the 08/11/16 Flood of Baton Rouge.
- Hauled, Repaired Sewer-Water-Electrical Systems at flooded sites.



### Geotechnical Core Drilling, Soil Sampling, and Lab Testing

**Clients:** USACE Galveston District  
**Obligated Value:** \$1,895,160 + \$20,000,000

#### Description:

- Field exploration, core drilling, soil sampling & laboratory testing services.
- Determined the type, nature, & characteristics of the subsurface material at existing & proposed project sites.



### Petroleum Spill Response at Pump Stations; New Orleans, LA

**Client:** USACE New Orleans District  
**Obligated Value:** \$2,645,845

#### Description:

- Four consecutive maintenance and emergency response contracts for ERS at the 17th Street, Orleans Avenue, & London Avenue Canals.
- Performed a wide range of investigations, response actions, and removals. Emergency response was provided with 1-hour notice.



### REAT and ERS Contracts; USACE SAJ & USACE SAS

**Client:** USACE Jacksonville, Savannah Districts  
**Obligated Value:** \$3,688,536 – \$17,504,827

#### Description:

- REAT utilized by all USACE South Atlantic Division (SAD) Districts.
- Projects Include: Asbestos, Abatement, and Demolition of White Elementary at Fort Benning; Natural Resources and Environmental Support at Fort Gordon; Installation Restoration Support at Fort Benning; Soil Excavation and Remediation at Fort Gillem; Natural Resources and Environmental Support at Fort Bragg.



### 'Lock Master' Bldg. Construction; Port Allen, LA

**Client:** USACE New Orleans District  
**Obligated Value:** \$1,303,218

#### Description:

- Constructed a two-story, 2,176 square foot structure with porches on both stories.
- Built on a soil-supported concrete slab on top of the levee located adjacent to the Port Allen Lock.

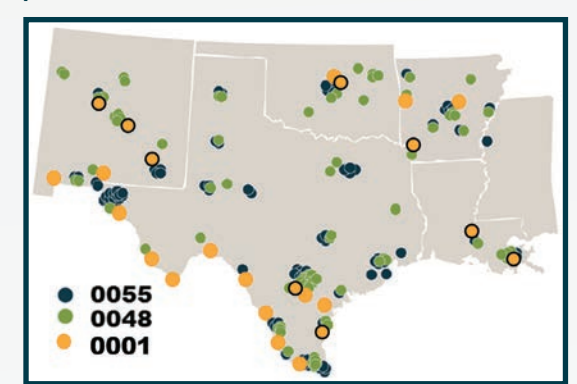


### Env. Services and Testing; LA-AR-OK-TX-NM

**Clients:** General Service Administration (GSA), Region 7  
**Obligated Value:** \$8,670,004

#### Description:

- Project support includes Comprehensive Environmental Assessments, Environmental Investigations, Asbestos Surveys, Asbestos Air Monitoring, Project Oversight, Phase I Environmental Site Assessments, Cultural Resource Assessments, Environmental and Regulatory CATEx Checklists, NEPA Environmental Assessments, Environmental Impact Statement.



### A-E Services for Environmental Engineering

**Client:** USACE Tulsa, Fort Worth, Little Rock Districts  
**Obligated Value:** \$16,800,000

#### Description:

- Performed multiple EA, RCRA field investigations.
- CAA services & SPCC-Inventory Updates.
- Performed PFAS Phase I RIs at multiple AFBs.
- Prepared Proposed Plans & Decision Documents for various FUDS.
- Developed Remedial Designs.
- Performed Groundwater Sampling, Methane Sampling & Statistical Analysis & Reporting.

