

POINTS OF CONTACT

COMMERCIAL

Amie Chatman
acha@qri.com
225.335.3868

INDUSTRY

Perrin Sims
psim@qri.com
985.264.5251

GOVERNMENT

Kenny New
knew@qri.com
225.268.5692

Matt Larroquette
mlarroquette@qri.com
225.931.0323

Bonnie Duncan
bduncan@qri.com
443.538.0724

Fonda Lindfors New, PG, PMP
fnew@qri.com
225.202.8438

Jeff Howard
jhoward@qri.com
225.276.0657

COMPANY INFO

13588 Florida Blvd
Baton Rouge, LA 70819

Phone: 225.292.1400
24/7: 800.889.5378

Email: info@qri.com
www.qri.com

OUR SERVICES

Environmental & Engineering

- Biological Services
- Cultural Services
- Natural Services
- Geophysical Services
- Pulser™ Subsurface Survey System
- NEPA Services
- Phase I, II, III ESA
- EA / EIS
- GIS Support
- SPCC / SWPPP
- Mold, Asbestos, Pb
- Regulatory Comp. & Permitting
- Design
- Subject Matter Expert

Infrastructure & Construction

- Utility Locates
- Geotechnical Drilling
- Relief Well Installation
- Demolition
- Ditching / Grading
- Parking Lot Installs
- Site Preparation
- Levee Construction
- Building Construction
- HWY, Street & Bridge
- Heavy & Civil Engineering
- Lock & Dam Repairs
- Landscape Services
- Remodeling

Remediation & Emergency Response

- Spill Response
- Disaster Response
- Disaster Monitoring
- MHU Haul & Install
- Debris Removal
- Wells (Recovery, MW, Piezometer)
- Environmental Sequence Stratigraphy (ESS)
- Soil / Groundwater
- Mold, Asbestos, & Pb
- HTAS™
- Pit Removal
- Pump & Treat
- RA, Removals & O/M

Information Technology & Artificial Intelligence

- Installation of Sales, Admin, Tech Operational Systems [Timothy™]
- Custom AI Integration
- MSP / MSSP Services
- O365 Support
- AD / Azure AD Support
- Custom Programming
- API Integration
- Automation
- Desktop | Server & Network Installation and Support
- Cloud Migration and Support
- Security Implementation (NIST, HIPPA, SOC2, ISO27001)
- Phone System Installation
- Hardware / Software Purchasing
- Security Monitoring & Awareness Training

15,143 Projects (1986 - Present)

Commercial | Industry | Government

Mentor-Protégé with:



#1 in Environmental Management

Top 1.5% of USACE Contractors

Total Small Businesses: #196 of 12,758

USACE Award Amount: \$150,027,388

\$11.72B

ACTIVE CONTRACT VALUE



QRI CPARS RATINGS

81% Excellent or Very Good



QRI FEDERAL AGENCY CLIENTS

- DoD, USACE (15 Districts)
- GSA
- DoD, USAF
- US EPA
- DoI, NPS
- DoI, USGS
- DoHS, FEMA
- DoHS, USCG
- DoVA
- DoD, Army
- DoD, NAVFAC
- DoI, FWS
- DoJ, FBP

QRI'S HISTORY ALONG THE MISSISSIPPI RIVER

1

1986 - 1993: QRI, located along the Lower Mississippi River in the Upper Coastal Zone, was founded to assess and close the Exploration & Production process water impoundments in TX and LA. QRI focused primarily on industrial clients (e.g., Chevron, Dow, Ethyl, Gulf Power) and Commercial clients (e.g., Tetra Tech, Jacobs, Arcadis US, AECOM, WSP, TechLaw, Inc.).

QRI developed trademarked Hard-To-Access Sampling (HTAS™) technology to define closure plans on CERCLA USEPA Superfund sites (39), oil field sites (1,464), and industrial RCRA water impoundments (109).

QRI developed trademarked Pulser™ (geophysical subsurface technology) to perform Environmental Sequence Stratigraphy (ESS) for environmental & engineering consulting and remediation.



2

1994 - 2006: QRI was certified as a Federal 8(a) Contractor in 2004 and was awarded its first Federal prime contract in 2005. With Commercial, Industrial, and Government contracts located in the Gulf of Mexico and the Lower Mississippi River, QRI began expanding west and north of the Middle Mississippi River region.

QRI's expertise, referred to as "unequaled in Louisiana" by a well-known industry lawyer, was sought for litigation concerning regulatory standards for process water impoundment closure and coastal restoration.

QRI's business units expanded to Emergency Response and Remediation, resulting in important Federal subcontracting work for USEPA START post Hurricanes Katrina and Rita.

QRI also added Direct Push Technology (DPT) Drilling Services in conjunction with HTAS™ and Subsurface Utility Engineering (SUE) Services.

3

2007 - 2015: QRI acquired multiple Federal contracts west and east of Old Man River. Eastern pursuits won contracts with USACE New York, Savannah, and Jacksonville Districts. Western pursuits achieved contracts with USAF AFCEE, GSA Region 7, and USACE Districts, including Fort Worth, Vicksburg, Memphis, Seattle, Galveston, Tulsa, and 9 other USACE districts.

QRI added Construction to its services (including Levee and River Infrastructure) and Facility Support sections and formed multiple Mentor-Protégés and Joint Ventures

QRI developed an operational management structure based on ISO and CMMI standards (Timothy™).

4

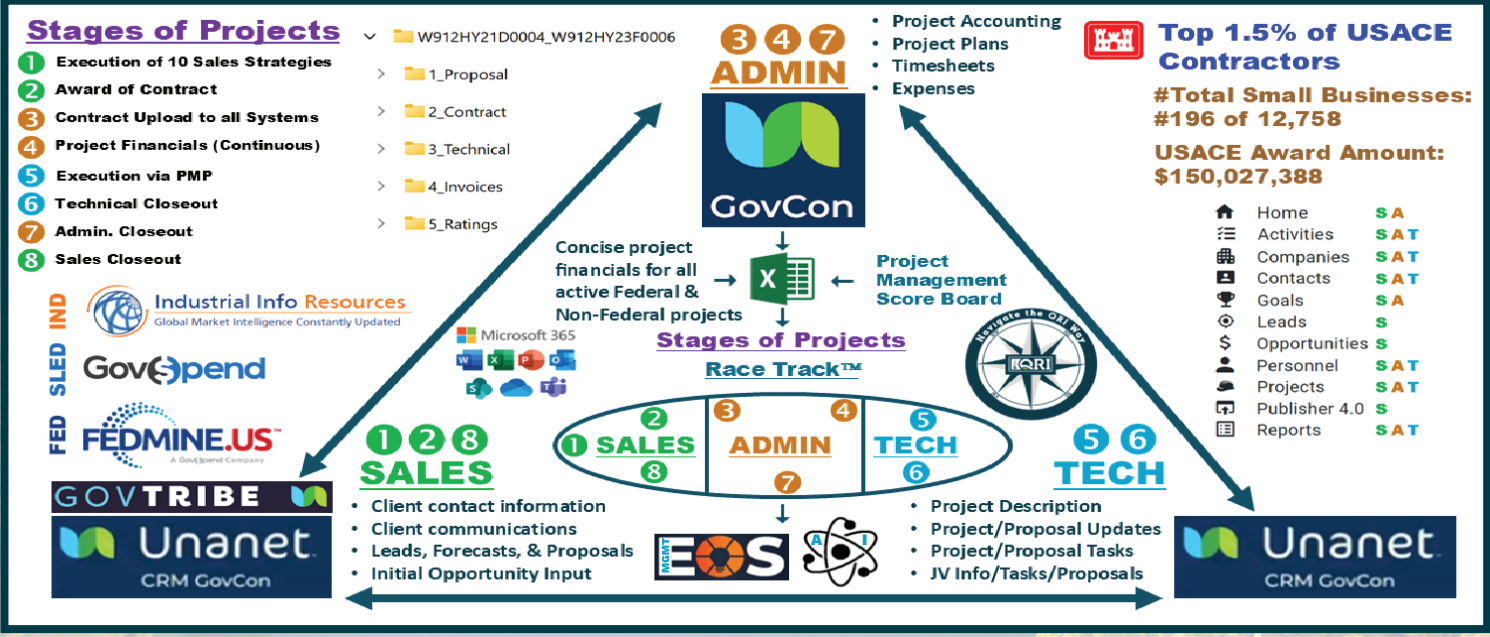
2016 to Present: QRI added Engineering Services (including transportation/installation of MHUs and Security Systems sections) to its expanding portfolio of services.

Despite the 2016 floods impacting QRI headquarters, we won two Haul & Install contracts and executed the work, within 45 days, from our flooded 6-acre facility to support other flood victims. Our stability has been a very critical factor in its continued success despite natural disasters, pandemics, recessions, industry failures, client mergers, and Federal policy changes.

From QRI's start in the Delta of the Mississippi River to the River's origin in Minnesota to continuous expansion across the USA and beyond, the company proudly spotlights our 7,016 projects with a current contract value of \$747.4M. Across QRI's Commercial, Industrial, and Government sections, our cumulative experience supports our clients' missions for environmental, engineering, civil works, construction, restoration, and natural disaster recovery projects.

MARKET	Commercial	Industry	State & Local Government	Federal Government
PROJECTS	1,272	3,013	1,599	9259
AMOUNT	\$5,316,694	\$26,117,562	\$11,710,450	\$186,177,455
%	2.32%	11.39%	5.11%	81.19%

THE TIMOTHY™ SYSTEM



WHO WE ARE!

QUALITY | RELIABILITY | INTEGRITY

As of Feb. 2025

U.S. W/VC/NV/WEKES
CAGE CODE: 3FCQ39
GSA 899 MAS: GS05F058A
NAICS: 111111-1111-1111
Woman Owned Small Business (WOSB)

QRI
Quaternary Resource Investigations, LLC

Facebook, Twitter, LinkedIn icons

1 1986-1993 Environmental & Engineering, Pulser™, Drilling (HTAS™) Sections

Utilizing QRI's HTAS™ drilling and sampling techniques and Pulser™ Environmental Sequence Stratigraphy (ESS) techniques, QRI supported the closure of over 1,000 RCRA and NOW/NORM sites at petrochemical, oilfield, and utility locations and thirty-nine (39) Superfund (CERCLA) sites for industrial clients (e.g., Chevron Companies, Texaco USA, Dow, Ethyl, Shell, Albemarle, Clark Refining, Amoco, Citgo, Ciba Geigy, Phillips 66, etc.) throughout the USA.

QRI developed trademarked technologies, Hard-To-Access-Sampling™ (HTAS™) and Pulser™, to help support environmental projects at Superfund and Industrial sites under CERCLA, RCRA and NOW/NORM regulatory laws.

QRI's founder, Fonda Lindfors New, began the State of LA Radiocarbon Laboratory for Coastal Restoration. She then founded QRI in 1986, which is an SBA-approved Woman Owned Small Business (WOSB).

2 1994-2006 Remediation, Emergency Response, Subsurface Utility Engineering (SUE) Sections

SME work for industry throughout the Mississippi River and its tributaries intensifies with QRI being awarded several summary judgments for the oil industry on multiple cases. QRI continues to perform HTAS™ and Pulser™ - ESS services for industry and many large consultants throughout the Mississippi River Valley.

QRI's expertise resulted in more awards and our project experience expanded north on the Mississippi River and throughout its tributaries including RCRA HTAS™ assessment of Amoco impoundments on the Missouri River, RCRA HTAS™ assessment/closure of the NICOR facilities on the middle Mississippi and Ohio Rivers, and Pulser™ - ESS assessments on the petrochemical facilities on the Mississippi river in Hartford, IL.

3 2007-2015 Construction, Facility Support Sections

QRI utilizes its past performance record in HTAS™, Pulser™ - ESS and SME services throughout the Mississippi River Delta Plain and Alluvial Valley and applies for US SBA 8(a) status, which was awarded on January 13, 2004. In 2005, Hurricanes Katrina and Rita ravaged the Gulf of Mexico Coastal Zone resulting in QRI being "BLOWN" into the Federal arena. QRI's Government business section has thrived due to our knowledgeable expertise and custom-built management infrastructure.

Post-Katrina, QRI forms Mentor-Protégé and Joint Venture relationships in order to expand our geographic territory. QRI thrives and wins 60 Federal contracts during this time period.

Fonda Lindfors New, CEO of QRI, is named US Small Business Administration "Person of the Year." QRI continues to grow and wins an additional 51 Federal contracts during this time period and continues to add services and expertise in various NAICS codes.

4 2016-2023 Engineering (Civil), Security Systems Sections

QRI now provides services the length and breadth of the Mississippi River from the Headwaters to the Delta.

Background Photo: An old topographic map of the Mississippi River course that was created by Erhard and Bonaparte and published in 1882 in the French weekly travel journal, Le Tour du Monde, Paris.

From QRI's beginning in the Delta of the Mississippi River to the River's origin in Minnesota to continuous expansion across the USA and beyond, QRI proudly spotlights our 3,126 Industrial Projects, 1,252 Commercial Projects and our 2,682 Government Projects that have resulted in a total revenue of \$240.2M in 18 Joint Ventures, which is why QRI has been able to maintain Small Business status with the Federal Government.

HTAS™

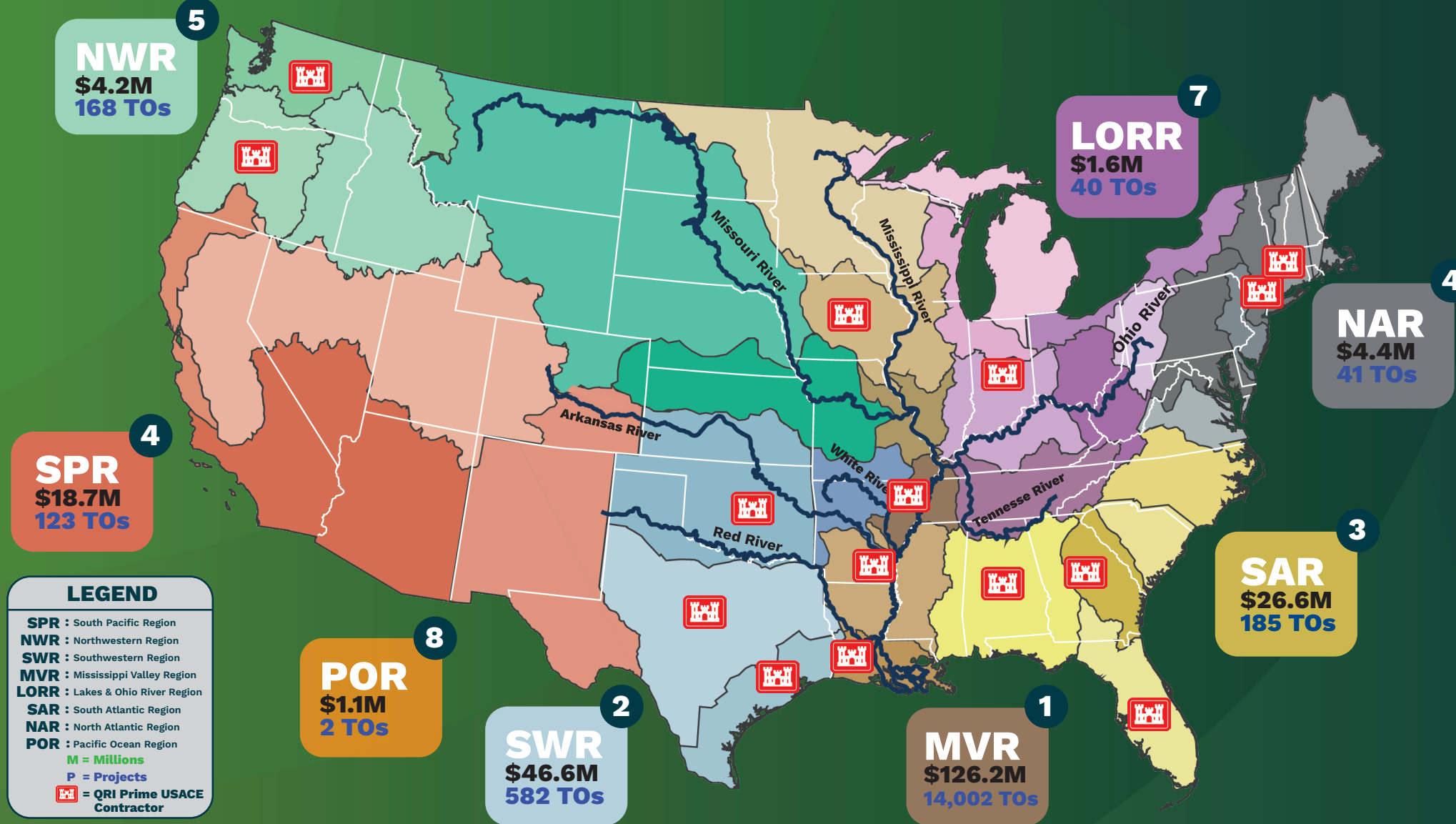
PULSER™

LOCK MASTER STRUCTURE
PORT ALLEN, LA

MAT CASTING YARD
ST. FRANCISVILLE, LA

STRONG GOVERNMENT & INDUSTRIAL BACKGROUND

Past Performance = \$1,670,148,756 | 68 Active Contracts = \$747,371,204 |  15 Districts



SERVICE AREAS

- 213112 - HTAS™ | Support Activities, Oil & Gas
- 213113 - Pulser™ | Support Activities, Mining
- 236118 - Residential Remodelers
- 236220 - Commercial & Institutional Building Construction
- 237110 - Water & Sewer Line Construction
- 237310 - Highway, Street, & Bridge Construction
- 237990 - Heavy & Civil Engineering Construction
- 238150 - Glass & Glazing Contractors
- 238350 - Finish Carpentry Contractors
- 238910 - Site Preparation Contractors
- 238990 - Natural Disasters | Specialty Trade Contractors
- 332999 - Other Miscellaneous Fabricated Metal Product
- 423390 - Other Construction Material Merchant Wholesalers
- 483211 - Inland Water Freight Transportation
- 532490 - Other Commercial & Industrial Equipment Rental
- 541330 - Engineering Services
- 541360 - Geophysical Surveying and Mapping
- 541370 - Infrared | Surveying & Mapping Services
- 541380 - DPT | Geotechnical Testing
- 541430 - Graphic Design Services
- 541511 - IT | Computer Programming Services
- 541620 - Environmental Consulting Services
- 541690 - SME | Scientific & Technical Consulting
- 561730 - Landscaping Services
- 562119 - Natural Disasters | Other Waste Collection
- 562910 - Remediation
- 562998 - Natural Disasters | Environmental Waste Management
- 811310 - Commercial & Industrial Equipment Repair | Maintenance

KEY

- Primary = \$40M - \$5M
- Secondary = \$4.99M - \$0.50M
- Tertiary = <\$0.49M - \$0.01M

SERVICES (As of Feb. 2025)	NAICS	PROJECTS	AMOUNT	%
HTAS™ & DPT Services Support Activities, Oil & Gas, Industry, Government	213112, 541380	685	\$10,727,035	4.68%
Pulser™ & Geophysical Services Support Activities, Mining, Construction, Industry	213113, 541360	3,185	\$18,059,212	7.88%
Construction Services (Vertical, Horizontal & Trades)	236, 237, 238	279	\$55,168,194	24.06%
Natural Disaster Emergency Response Services	238990, 483211, 562119, 562998	9,558	\$46,883,919	20.44%
Engineering, Civil Design & Subject Matter Expert Services	541330, 541690	415	\$28,653,101	12.49%
Environmental Remediation Services	562910	108	\$30,109,215	13.13%
Environmental Consulting Services	541620, 541350, 541370, 541430, 541511, 561210	915	\$39,721,483	17.32%

TOP CLIENTS: GOVERNMENT | COMMERCIAL | INDUSTRY



HTAS™ Sampling at 39 CERCLA Sites; TX-LA-MS-AL-FL-SC

Clients: Tetra Tech, CH2M Hill, Shaw, Radian, URS, etc.
Obligated Value: \$2,173,444
Description:

- Method = HTAS™ for cores measuring 3" OD with a length from 5' to 30'.
- 3,127 core sludges and underlying contaminated sediments.
- Sites sampled = TX – 9 sites, LA – 14 sites, MS – 4 sites, AL – 4 sites, FL – 7 sites, SC – 1 site.



NOW/NORM Site Closures; TX-LA-MS

Clients: Chevron USA E&P, Texaco USA E&P, Shell, etc.
Obligated Value: \$11,735,367
Description:

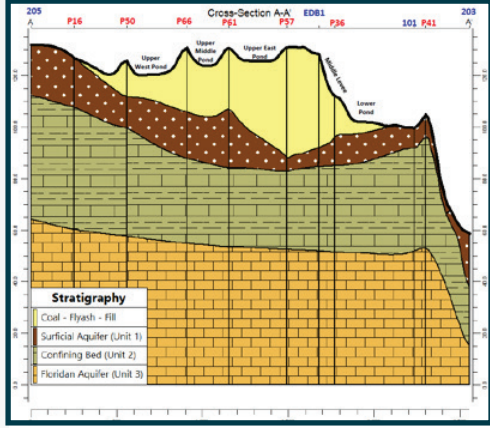
- Analysis of sites, waste volumes, remediation estimates, bid packages, removal oversight, closure certification, Hazardous, Toxic, and Radioactive Waste (HTRW) management, recycling, and Subject Matter Expert Services.
- 244 Oil Fields (TX-LA-MS), 1,464 pits.



Pulser™ Tech at Florida's Scholz Generating Plant

Clients: Gulf Power Company
Obligated Value: \$292,000
Description:

- Defined the ESS in the upper 80 feet of 287 acres surrounding the ash impoundments at the generating plant.
- Determined the Confining Bed underlying the coal-ash fill deposits was continuous across the entire extent of the facility.



Env. & Sampling Services; Lincoln County, MS

Client: Chevron Environmental Management Corp.
Obligated Value: \$4,321,028
Description:

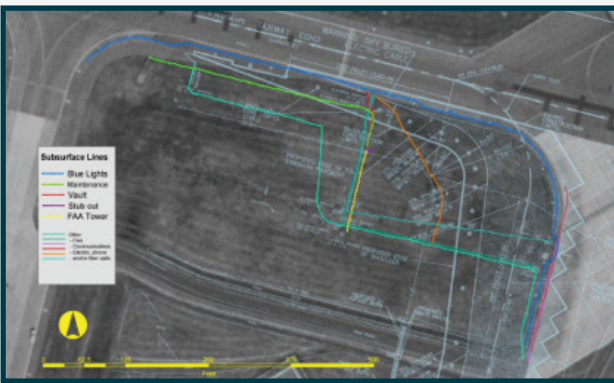
- Conducted confirmatory sampling and provided Closure Verification Reports for 212 landowner sites per the court ordered closure standards.
- Reports included sample results that were collected and analyzed for Non-Hazardous Oilfield Waste (NOW) and Naturally Occurring Radioactive Materials (NORM) parameters per the court approved Brookhaven Remediation Plan.



Subsurface Utility Engineering Services at US Airports

Clients: AECOM, Airfield Western, ARA, etc.
Obligated Value: \$2,005,497
Description:

- Various uses of SUE and Geophysical services at airports include:
- Locating underground utilities, sub-slab voids, USTs, drums, debris fields, areas of disturbed/previously excavated soils.
 - Locating rebar, tension cables, conduit, pipes, etc.
 - Determining concrete thickness.



Hauling & Installing MHUs; Baton Rouge, LA

Client: USACE Memphis District
Obligated Value: \$20,529,942
Description:

- Transport and installation of 759 Manufactured Housing Units.
- Customized Manufactured Housing Units installation at each site for the conditions due to the 08/11/16 Flood of Baton Rouge.
- Hauled, Repaired Sewer-Water-Electrical Systems at flooded sites.



Geotechnical Core Drilling, Soil Sampling, and Lab Testing

Clients: USACE Galveston District
Obligated Value: \$1,895,160 + \$20,000,000
Description:

- Field exploration, core drilling, soil sampling & laboratory testing services.
- Determined the type, nature, & characteristics of the subsurface material at existing & proposed project sites.



Petroleum Spill Response at Pump Stations; New Orleans, LA

Client: USACE New Orleans District
Obligated Value: \$2,645,845
Description:

- Four consecutive maintenance and emergency response contracts for ERS at the 17th Street, Orleans Avenue, & London Avenue Canals.
- Performed a wide range of investigations, response actions, and removals. Emergency response was provided with 1-hour notice.



REAT and ERS Contracts; USACE SAJ & USACE SAS

Client: USACE Jacksonville, Savannah Districts
Obligated Value: \$3,688,536 - \$17,504,827
Description:

- REAT utilized by all USACE South Atlantic Division (SAD) Districts.
- Projects include: Asbestos, Abatement, and Demolition of White Elementary at Fort Benning; Natural Resources and Environmental Support at Fort Gordon; Installation Restoration Support at Fort Benning; Soil Excavation and Remediation at Fort Gillem; Natural Resources and Environmental Support at Fort Bragg.



'Lock Master' Bldg. Construction; Port Allen, LA

Client: USACE New Orleans District
Obligated Value: \$1,303,218
Description:

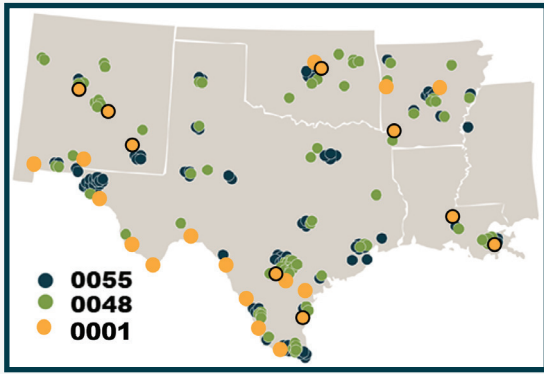
- Constructed a two-story, 2,176 square foot structure with porches on both stories.
- Built on a soil-supported concrete slab on top of the levee located adjacent to the Port Allen Lock.



Env. Services and Testing; LA-AR-OK-TX-NM

Clients: General Service Administration (GSA), Region 7
Obligated Value: \$8,670,004
Description:

- Project support includes Comprehensive Environmental Assessments, Environmental Investigations, Asbestos Surveys, Asbestos Air Monitoring, Project Oversight, Phase I Environmental Site Assessments, Cultural Resource Assessments, Environmental and Regulatory CATX Checklists, NEPA Environmental Assessments, Environmental Impact Statement.



A-E Services for Environmental Engineering

Client: USACE Tulsa, Fort Worth, Little Rock Districts
Obligated Value: \$16,800,000
Description:

- Performed multiple EA, RCRA field investigations.
- CAA services & SPCC-Inventory Updates.
- Performed PFAS Phase I RIs at multiple AFBs.
- Prepared Proposed Plans & Decision Documents for various FUDS.
- Developed Remedial Designs.
- Performed Groundwater Sampling, Methane Sampling & Statistical Analysis & Reporting.

